

# Agenda

Apollo's guide to what's on around the world in October

1

## Museum Opening The National Sporting Library & Museum, Virginia

[www.nsl.org](http://www.nsl.org)  
This month the National Sporting Library opens its Sporting Art Museum – a new space for temporary exhibitions. The first of these, 'Afield in America: 400 Years of Animal & Sporting Art 1585–1985' opens on 11 October, and includes John Abbot's delicate *Passenger Pigeon* (c. 1790).



2

## Johan Zoffany Yale Center for British Art New Haven

[www.britishart.yale.edu](http://www.britishart.yale.edu)  
This hotly anticipated exhibition promises a radical re-evaluation of this major 18th-century artist. 'Johan Zoffany RA: Society Observed' includes 65 oils as well as drawings and prints, many of which are rarely exhibited. Illustrated here is *Asaf-ud-daula, Nawab Wazir of Oudh* (1784).

3

## White Gold Frick Collection, New York

[www.frick.org](http://www.frick.org)  
The Frick celebrates the opening of its new Portico Gallery – the first addition to its display spaces in nearly 35 years – with a show of Meissen porcelain from the Henry H. Arnhold collection. Some 70 pieces from Arnhold's donated gift of 131 objects, including this stupendous teapot (c. 1725–31), are set to dazzle.



4

## Pacific Standard Time J. Paul Getty Museum Los Angeles

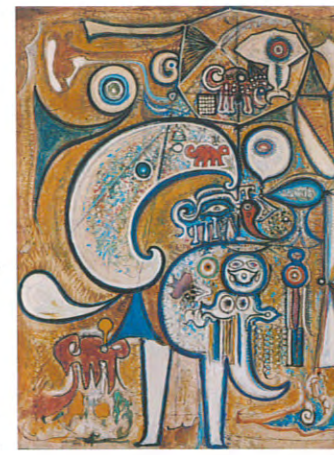
[www.getty.edu](http://www.getty.edu)  
'Crosscurrents in L.A. Painting and Sculpture, 1950–1970' is part of Pacific Standard Time, a Getty initiative for which over 60 arts organisations will stage shows on aspects of the Los Angeles art scene. *Walter Hopps Hopps Hopps* (1959), by Edward Kienholz, is one of 76 works in this particular show.



5

## Crafting Modernism Museum of Arts & Design New York

[www.madmuseum.org](http://www.madmuseum.org)  
11 October–15 January 2012  
'Crafting Modernism: Midcentury American Art and Design' explores the bold aesthetics produced by the fusion of craft and design in post-war America. *Forms: Transcendental* (1950), by Richard Pousette-Dart, is alongside works by Harry Bertoia and Sheila Hicks.



8

## The Medieval Sculptor Liebieghaus Frankfurt

[www.liebieghaus.de](http://www.liebieghaus.de)  
27 October–4 March 2012  
This is the first major exhibition on Nicolaus Gerhaert von Leyden (c. 1430–73), among the most important sculptors of the Late Gothic period, and about whom little is known. Some 70 works in stone and wood, including pieces from the *High Altar of Nördlingen* (c. 1462), are on display.

9

## Claude Lorrain Ashmolean Museum Oxford

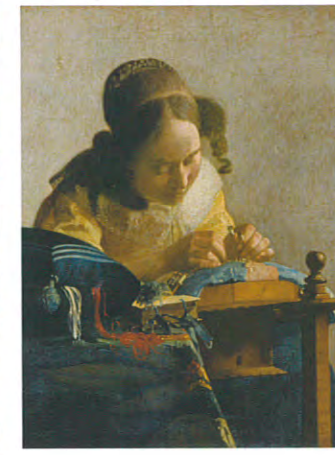
[www.ashmolean.org](http://www.ashmolean.org)  
6 October–8 January 2012  
*View on the Tiber* (1633) is one of 140 works united in 'Claude Lorrain: The Enchanted Landscape'. As well as displaying paintings conceived by the artist as pairs, the exhibition includes drawings and etchings that reveal the occasional eccentricity of Lorrain's graphic oeuvre.



6

## Vermeer's Women Fitzwilliam Museum Cambridge

[www.fitzmuseum.cam.ac.uk](http://www.fitzmuseum.cam.ac.uk)  
5 October–15 January 2012  
At the heart of this exhibition is Johannes Vermeer's *The Lacemaker* (c. 1669–70) – on loan from the Louvre to the UK for the first time – which accompanies over 30 Dutch Golden Age paintings focused on the depiction of interiors.



7

## Filippino Lippi & Botticelli Scuderie del Quirinale Rome

[www.scuderiequirinale.it](http://www.scuderiequirinale.it)  
5 October–15 January 2012  
With an emphasis on Lippi's work, 'Filippino Lippi and Sandro Botticelli in 15th-Century Florence' explores the artistic careers of these two Renaissance pioneers while contrasting their painterly styles. Pictured is Lippi's *Madonna in Adorazione del Bambino* (1478).



10

## The Spanish Line Courtauld Gallery London

[www.courtauld.ac.uk](http://www.courtauld.ac.uk)  
13 October–15 January 2012  
Taking as its theme the relatively little-known field of Spanish draughtsmanship, this exhibition showcases around 40 drawings from the 16th to the 20th century in the Courtauld's collection. Goya's wonderfully energetic *Cantar y Bailar* (c. 1819–20) is among the highlights.